

Interdisciplinary Joint Urban Design Studio (IJUD studio)
STRASBOURG 2016 / ADELAIDE 2017 / TONGJI 2018



Experiential Studio offshore – ARCH7038
INNER HARBOURS, SHARING ECONOMY, URBAN MOBILITY

1st July to 8th of July - FINAL REPORT

Funded by: AC21 Special Project Fund (SPF)
12/12/2016

Course coordinator: Dr Elisa Palazzo (SABE)

UNIVERSITIES INVOLVED

SABE (School of Architecture and Built Environment)
University of Adelaide

ENSAS (Ecole Nationale Supérieure d'Architecture) / FSEG (Faculty of Economics and Management),
University of Strasbourg

CAUP (College of Architecture and Urban Planning)
Tongji University, Shanghai

PARTICIPANTS

Prof Cristiana Mazzoni (ENSAS, Urban Design)
Prof Jian Zhuo (CAUP, Urban Design)
Prof Jean-Alain Héraud (BETA, FSEG)
Dr Elisa Palazzo (SABE, Landscape/Urban Design/Environmental planning)
Arch Anne Jaureguiberry (ENSAS, Urban Design)
Prof Badariotti University of Strasbourg, Faculty of Geography
Lionel Debus, PhD candidate ENSAS
Fang Lang, PhD candidate CAUP Tongji
Jill Ferrier, Head of International relations (ENSAS)

Local Stakeholders and others involved

Eric Chenderowski, Director of urban planning of Eurométropole of Strasbourg (EMS)
Dominique Kippelen, artiste
Nicolas Teinturier, CCI (Chambre de Commerce et d'Industrie de Strasbourg et du Bas-Rhin)
Thierry Danet, Ozonosphere
Prof Henry Bava (KIT, Dep. Of Landscape Architecture)

STRASBOURG STUDIO coordinators:

Prof Jean-Alain Héraud (BETA, FSEG)
Dr Elisa Palazzo (SABE)
Arch Anne Jaureguiberry (ENSAS)

The students of SABE, ENSAS, FSEG and CAUP.

AIM AND OBJECTIVES

The Interdisciplinary Joint Urban Design studio (IJUD studio) is a partnership between the University of Adelaide, the University of Strasbourg and Tongji University, Shanghai.

The workshop has involved a group of 18 Master students in Landscape Architecture (SABE), Architecture (SABE), Urban Design (ENSAS and CAUP) and Project Management (FSEG), from the Universities of Adelaide, Strasbourg and Tongji; two PhD candidates from ENSAS and CAUP Tongji and researchers from the university involved, which have worked together on a common Urban Design proposal.

The topic of the studio was “Inner Harbours, Sharing Economy, Urban Mobility” and was coordinated by Dr Elisa Palazzo and Arch Anne Jaureguiberry with Prof Jean Alain Héraud, Prof Cristiana Mazzoni, and Prof Jian Zhou. The scope of the studio was to bring together a group of students/researchers with different nationalities and backgrounds to work on the urban and architectural space of Sharing Economy and Economic Creativity.

Four French/Australian/Chinese interdisciplinary teams of students have work collaboratively and proposed projects on the area of the Port du Rhin in Strasbourg, coordinated by PhD students and researchers.

Six lectures were delivered by researchers of the partners universities and local stakeholders, during the week in Strasbourg. The workshop was the occasion for researchers of the partners’ institutions to get together and discuss the prosecution of activities for 2017 and 2018.

The next edition of the IJUD studio will be held in April 2017 in Adelaide, South Australia.

In addition, the students of Adelaide SABE have travelled to Rotterdam to visit the Rotterdam Architecture Biennale on Next Economy in order to prepare the topic of the studio in Strasbourg.

PROJECT PHASES

PHASE 1 – 2nd-8th July 2016 in Strasbourg

ENSAS will receive 8/10 students from SABE and School of Economics of the University of Adelaide.

PHASE 2 – April (dates TBC) 2017 in Adelaide

8/10 ENSAS/Tongji students will travel to Australia to work at SABE in Adelaide on the Port Adelaide areas.

PHASE 3 – Tongji (TBC)

STUDENTS’ TEAM

8 students from SABE, University of Adelaide

2 students from FSEG, University of Strasbourg

4 students from ENSAS, University of Strasbourg

4 students from CAUP, Tongji University

The workshop was held in English.

KEYWORDS

The urban and the architectural space of mobility and Sharing Economy; New urban economy models; People and goods mobility; urban logistics, supply chains and routes; inner harbours and urban waterfronts; Climate change, urban environment and mobility; New urban patterns; urban energy.

PROGRAM OF ACTIVITIES IN STRASBOURG
02nd June to 8th July 2016:

DATE	WHEN AND WHAT	WHERE	TO DO
Fri 01/07	14.00 – research meeting with Prof Mazzoni, Prof Zhou, Dr Palazzo, Jill Ferrier		
Sat 02/07	9.00 - Meet in Rue Moll with all students for IJUD studio presentation. Welcome “Café-Croissants”. Presentations by Prof Mazzoni, Prof Zhou, Dr Palazzo, Prof Héraud, Arch Jaureguiberry, Jill Ferrier. 9.30 - Presentation of teams 10.00 - Presentation of the site and studio’s topic by A. Jaureguiberry: “ <u>SHARE in city</u> ” 11.00 - <u>The Rotterdam Biennale oh Sharing Economy</u> (presentation by Elisa Palazzo and the SABE students) 11.30 - Launch Challenge #1 12.00 – 19.00 Independent work	Rue Moll	CHALLENGE #1: 24h to produce an artistic performance with a 2 min film.
Sun 03/07	9.00 - Meet in Rue Moll with all students 9.30 - Presentations of Challenge #1 by the students 10.30 - Presentation by Jean-Alain Héraud (BETA, FSEG): “ <u>Anatomy of a creative city</u> ” 11.30 Launch Challenge #2 12.00 – 19.00 Independent work and groups work review	Rue Moll	CHALLENGE #2: 24h to produce diagrams of new processes and uses, new economy, upcycling or creative reuse, mobility and context, innovative mobility, local economy to decrease carbon emissions, etc. Production of Graphics and conceptual models.
Mon 04/07	9.00 - Meet at ENSAS with all students 9.30 - Presentations of Challenge #2 by the students with the participation of Dominique Kippelen, artiste. 10.30 Presentation by Eric Chenderowsky (EMS), “ <u>Port du Rhin between past and future</u> ” 13.00 Launch Challenge #3 14.00 – 17.00 Visit of Port of Strasbourg organised by CCI By Nicolas Teinturier	ENSAS Room 5.01	CHALLENGE #3: 48 hrs to read the context, the existing landscape, the local geography; understand the relation with the German side; analyse possible innovative public spaces and new uses, etc. Develop the theme of innovative mobility in the city. Create a banner (Kakemono with a title, slogan and montage) representing the group’s question and proposal (what urban vision/scenario would
Tue 05/07	9.00 - Meet at ENSAS with all students 10.00 - Presentation by Prof Dominique Badariotti 16.00 Work reviews 18.00 Presentation and discussion with Prof Cristiana Mazzoni: “ <u>Mobility and the city</u> ” 15-00 23.30 Dr Palazzo travel to Karlsruhe to meet Prof Henry Bava, Head of the Department of Landscape at KIT	ENSAS Room 5.01	

			you want to enhance for the port of Strasbourg?)
Wed 06/07	9.00 - Meet at ENSAS with all students 09.30 - Presentations of Challenge #3 by the students 10.30 - Prof. Alessandro Massarente, University of Ferrara: " <u>Relation between settlement models and infrastructures, mobility, industrial dismissed areas</u> " 11.30 Launch Challenge #4 12.00 – 19.00 Independent work and groups work review	ENSAS Room 5.01	CHALLENGE #4: 48 hrs to draft final proposal: 2 X A1 (or 1 A0), banner, conceptual models, artistic performance (film)
Thu 07/07	9.00 - Meet at ENSAS with all students 9.30 – 18.30 Independent work and groups work review	ENSAS Room 5.01	
Fri 08/07	9.00 - Meet at ENSAS with all students 12.00 Final individual reviews 15.00 Final pin up and reviews with Prof J.A. Héraud, Dr E. Palazzo, Arch A. Jaureguiberry, Arch Alessandro Massarente, Dominique Kippelen, and Thierry Danet. 18.00 <u>Next year in Adelaide</u> Presentation of IJUD studio in Adelaide in 2016 By Dr Palazzo 18.30 - Closing ceremony and distribution of the IJUD studio Certificate Ensas/Tongji/Adelaide 20.00-Dinner in a typical Alsatian restaurant, the Gurtlerhoft, followed by: Edge Night - festival event dedicated to numeric art and creation (www.edgefest.fr) – videomapping, DJs, etc.	ENSAS Room 5.01	
Sat 09/07	09.00 Departure to Paris	Railway station	

ADRESSES:

Hotel in Rotterdam:

Holiday Inn Express Rotterdam - Central Station located at
Weena 121 Rotterdam, 3013 CK, Netherlands
Phone: 0031 10 820 2990

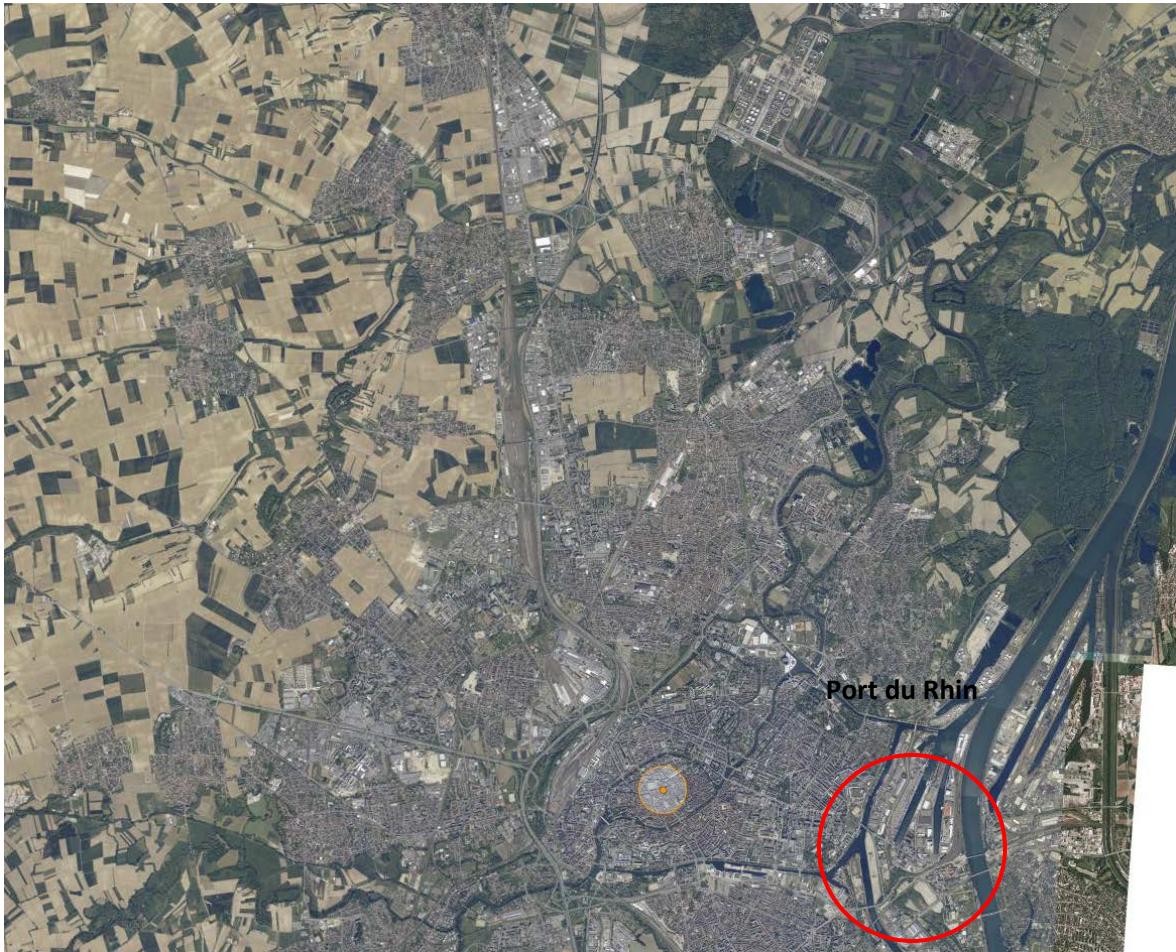
Students' accommodation in Strasbourg:

Residence de la Somme, 13 rue de la Somme 67000 Strasbourg
Directrice Madame Estelle Scheel - estelle.scheel@crous-strasbourg.fr - Tél: 03 88 21 28 70

ENSAS:

6-8 boulevard du Président Wilson, 67068 Strasbourg, France
Phone: 0033 3 88 32 25 35

Rue Moll: next to ENSAS



Port du Rhin - container terminal North / Port Autonome

RATIONALE

Conventional urban design/planning practices have increasingly become associated with a complex range of environmental, social and economic challenges such as greenhouse gas emissions, urban traffic congestion, air and water pollution, environmental risks, social isolation, urban seclusion and underuse, etc. Phenomena associated to urban mobility and logistic at the metropolitan scale are becoming particularly relevant in the management of transformative change in land use planning policy and lifestyle behaviours as cities move towards more environmentally sustainable and socially equitable development (Magnaghi A. 2005, *The Urban Village*).

In a more generalized context of urban transformation and climate change there is an urgent need for new paradigms and innovative interdisciplinary approaches to city design including urban consolidation, land recycling, optimization of existing infrastructure and the application of new alternative transport and energy technologies. In this frame, new urban economic models, such as the Sharing Economy or the Economic Creativity (Amin, A., Roberts J. 2008, *Community, economic creativity, and organization*), are emerging and will shape our future urban environment.

Within metropolitan regions there are areas that will be particularly affected by these future challenges: they represent great potential drivers towards change and adaptation, and valuable experimental grounds for innovative projects.

INNER HARBOURS, SHARING ECONOMY, URBAN MOBILITY

The “Inner harbours” of Strasbourg Port du Rhin, Port Adelaide and Huangpu River in Shanghai, are logistic areas dedicated exclusively to the mobility of people and the distribution of goods to the supply chains. Nevertheless, for their proximity to the water system and the ongoing urban dynamics, they represent a tremendous opportunity for the improvement of the urban environment liveability quality.

These parts of the urban territory are designated to very specific uses and share large infrastructures such as railways, waterways, high ways, etc., yet without receiving any value added from the process. Inner harbours are often associated with urban seclusion and underuse, air and water pollution. Nevertheless, for their proximity to the water hydrologic system, they represent a tremendous opportunity for the improvement of the urban environment liveability.

The studio will approach the spatial, mobility and environmental issues determined in these areas through the following main research questions:

How these areas are able to integrate all the scales of the territory through the different levels of the supply chains and of the mobility corridors and generate new spatial relationships within the existing city? Could the ideas of “Sharing Economy” trigger virtuous environmental practices that benefit the urban liveability? How is it possible to integrate the new hyper-connected/technological social behaviours and the new networking technologies towards the definition of a new concept of urban space upcycling? How do we connect the digital infrastructure to the physical infrastructure? How can we use technology to develop socially inclusive and environmentally sound urban economies? (Maarten Hajer)

Port du Rhin

The city of Strasbourg is promoting several large sustainability projects beyond its national urban boundaries. The new urban intercommunal plan will include the region of the “Euro-metropolis”, a new Franco-German geographical entity that will incorporate the two embankments of the Rhine River. Aiming at innovating the urban, social and energy domains, the plan is framed on a projection of demographic growth corresponding to about fifty thousand new inhabitants in a 20/25 years term.

In this context the area of the *Port du Rhin* represents a strategic location for the development of the future city and it will be the study area of the IJUD studio.

Port du Rhin is a place of exchange and movement of goods, from the large commercial scale to the local scale of retail, in close connection with Strasbourg urban districts. These are spaces of urban “logistic” that have the function of literally “nourish” the metropolitan area of Strasbourg.

The spaces of Port du Rhin are used intensively during certain hours but stop completely in others and are characterized by an intense activity of downloading, uploading, packaging and repackaging of goods in transition. At the end of the process these goods are ultimately distributed in town with a traditional truck delivery.

The goods supply and transformation chain is organized within enclosed precincts delimited by urban infrastructures. On the other hand, goods transit and are traded in areas next to the city centres, such as shopping malls and wholesale precincts near to urban canals and tramlines, but yet completely inaccessible to urban life. These areas, yet separated from possible social interactions, could take advantage of the flows created by the same distribution of goods.

The IJUD studio will explore how to open these territories to the rest of the city linking them to the neighbouring areas and how new economic processes and new mobility patterns can valorise and optimize the movement of goods, the retail sales, the recycling of packaging, the supply chains, and the value of trades.

The urban design proposals elaborated during the workshop will make an attempt to defining how the next generation of energy efficient activities and the emerging economies can be generated through a revision of the distribution processes and how, on the basis of these processes, it is possible to define new types of urban space and contribute to change the metropolitan urban image and identity.

The challenge of the workshop will be to envision a different physical asset for the areas affected by the urban logistic and to explore the possible spatial influence deriving from opening them to the urban dynamics, creating connections between different scales, preparing the transition of these urban ruptures towards new architectural places able to highlight the role of the “inner harbours” within urban areas.

The IJUD studio will investigate, in addition, how the new networking technologies can operate within the urban planning disciplines and how they can create value and territorial performance in manufacturing the city of tomorrow. The visions and actions that can be put in place are opportunities for future cities to shift towards low carbon mobility and combine economic, environmental and technological innovation.



School of Architecture and Built Environment
2-8 July 2016 - IJUD studio STRASBOURG/ADELAIDE/TONGJI
INTERDISCIPLINARY JOINT URBAN DESIGN STUDIO